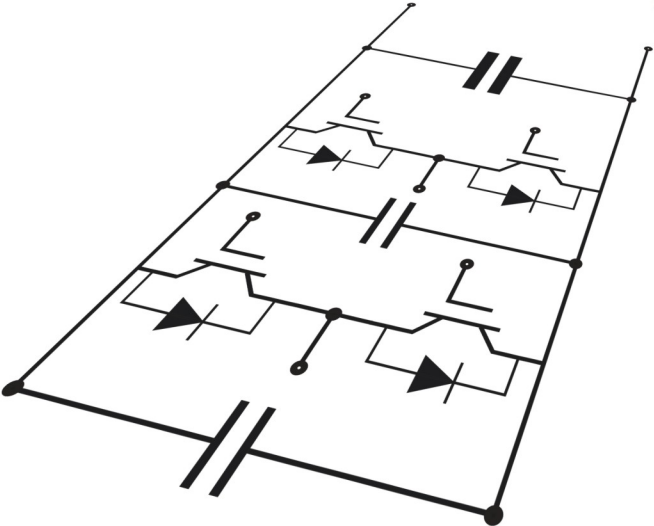


Snubber



EACO

专注于电力电子薄膜电容器

TÜVRheinland®
CERT
ISO 9001

RoHS 
COMPLIANT

产品特点

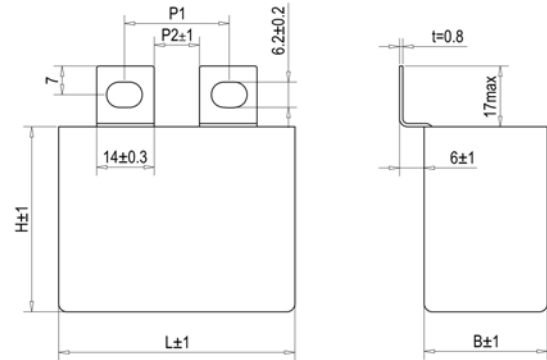
引用标准 : IEC 61071
 介质 : 金属化聚丙烯薄膜
 结构 : 干式无感结构, 塑料外壳封装, 树脂填充 (UL94 V-0)

电气特性

工作温度 : -40 °C 至 +105 °C
 容量范围 : 0.047 至 10 μ F
 额定电压 : 700 至 3000 VDC
 容量偏差 : $\pm 5\%$, $\pm 10\%$
 损耗因素 : $\leq 6 \times 10^{-4}$ @ 1KHz, 20 ± 5 °C
 预期寿命 : 100,000 小时 @ Un, 70 °C (热点温度)
 极间耐压 : 1.5Un (DC) @ 10s, 20 ± 5 °C
 极壳耐压 : (1.5Un+1000)VAC, 最小 3000VAC (10s,50Hz)
 绝缘电阻 : (IR \times Cn) 30000s (不超过 30G Ω), 100VDC (20 ± 5 °C), 1 分钟

应用

IGBT 突波吸收 嵌位



焊片规格

B. K. U. C. UF. CF. R. G.N. T. TF. E. D 等

可接受客户定制

特性参数

订货代码	容量 (μ F)	尺寸(mm)			Du/dt (v/ μ s)	Ipeak (A)	Ls (nH)	Irms@60°C @10KHz (A)	ESR@100KHz (m Ω)
		L	B	H					
Un 700VDC , Urms 380VAC , Us 1050V									
STM-700-1.0-&P#	1.0	42.5	24.5	27.5	325	325	≤ 25	15.0	4.3
STM-700-1.2-&P#	1.2	42.5	24.5	27.5	325	390	≤ 25	16.0	3.1
STM-700-1.5-&S#	1.5	42.5	22.0	30.0	325	487	≤ 25	18.0	3.5
STM-700-2.0-&P#	2.0	42.5	33.5	35.5	325	650	≤ 25	22.0	3.2
STM-700-2.0-&S#	2.0	42.5	28.0	37.0	325	650	≤ 25	21.5	3.2
STM-700-2.2-&P#	2.2	42.5	33.5	35.5	325	715	≤ 25	22.5	2.4
STM-700-2.2-&S#	2.2	42.5	28.0	37.0	325	715	≤ 25	22.0	2.4
STM-700-2.5-&P#	2.5	42.5	33.5	35.5	325	812	≤ 25	23.0	2.5
STM-700-2.5-&S#	2.5	42.5	28.0	37.0	325	812	≤ 25	22.5	2.5
STM-700-3.0-&P#	3.0	42.5	33.0	45.0	325	975	≤ 25	26.0	2.4
STM-700-3.0-&S#	3.0	42.5	30.0	45.0	325	975	≤ 25	25.5	2.4
STM-700-3.3-&P#	3.3	42.5	33.0	45.0	325	1072	≤ 25	26.5	2.4
STM-700-3.3-&S#	3.3	42.5	30.0	45.0	325	1072	≤ 25	26.0	2.4
STM-700-3.5-&P#	3.5	42.5	33.0	45.0	325	1134	≤ 25	27.0	2.0
STM-700-3.5-&S#	3.5	42.5	30.0	45.0	325	1134	≤ 25	26.5	2.0
STM-700-4.0-&P#	4.0	57.5	30.0	45.0	220	880	≤ 35	27.0	2.3
STM-700-4.0-&S#	4.0	42.5	33.0	45.0	325	1300	≤ 25	32.0	1.8
STM-700-4.7-&P#	4.7	57.5	35.0	50.0	220	1034	≤ 35	31.0	2.1
STM-700-4.7-&S#	4.7	57.5	30.0	45.0	220	1034	≤ 35	30.5	2.1
STM-700-5.0-&P#	5.0	57.5	35.0	50.0	220	1100	≤ 35	31.0	2.5
STM-700-5.0-&S#	5.0	57.5	30.0	45.0	220	1100	≤ 35	30.5	2.5
STM-700-5.6-&P#	5.6	57.5	35.0	50.0	220	1232	≤ 35	32.0	2.0
STM-700-6.8-&S#	6.8	57.5	35.0	50.0	220	1496	≤ 35	32.0	2.0
STM-700-10.0-&S#	10.0	57.5	42.5	56.0	220	2200	≤ 35	33.0	1.8

特性参数

订货代码	容量 (μF)	尺寸(mm)			Du/dt ($\text{V}/\mu\text{s}$)	Ipeak (A)	Ls (nH)	Irms@60°C @10KHz(A)	ESR@100KHz ($\text{m}\Omega$)
		L	B	H					
Un 850VDC , Urms 450VAC , Us 1275V									
STM-850-0.82-&P#	0.82	42.5	24.5	27.5	400	328	≤ 25	15.5	4.6
STM-850-1.0-&P#	1.0	42.5	24.5	27.5	400	400	≤ 25	17.5	4.0
STM-850-1.0-&S#	1.0	42.5	22.0	30.0	400	400	≤ 25	17.0	4.0
STM-850-1.5-&P#	1.5	42.5	33.5	35.5	400	600	≤ 25	23.0	2.2
STM-850-1.5-&S#	1.5	42.5	28.0	37.0	400	600	≤ 25	22.5	2.2
STM-850-2.0-&P#	2.0	42.5	33.5	35.5	400	800	≤ 25	23.5	2.2
STM-850-2.2-&P#	2.2	42.5	30.0	45.0	400	880	≤ 25	26.5	2.2
STM-850-2.5-&P#	2.5	42.5	33.0	45.0	400	1000	≤ 25	27.0	2.9
STM-850-2.5-&S#	2.5	42.5	30.0	45.0	400	1000	≤ 25	26.5	2.9
STM-850-3.0-&P#	3.0	57.5	30.0	45.0	280	840	≤ 35	28.0	3.4
STM-850-3.3-&P#	3.3	57.5	30.0	45.0	280	924	≤ 35	28.5	3.4
STM-850-4.0-&P#	4.0	57.5	35.0	50.0	280	1120	≤ 35	29.5	2.1
STM-850-4.7-&P#	4.7	57.5	35.0	50.0	280	1316	≤ 35	32.0	2.2
STM-850-6.8-&S#	6.8	57.5	42.5	56.0	280	1904	≤ 35	33.0	1.7
Un 1000VDC , Urms 480VAC , Us 1500V									
STM-1000-0.68-&P#	0.68	42.5	24.5	27.5	500	340	≤ 25	15.0	5.3
STM-1000-0.75-&P#	0.75	42.5	24.5	27.5	500	375	≤ 25	15.5	4.7
STM-1000-0.75-&S#	0.75	42.5	22.0	30.0	500	375	≤ 25	15.0	4.7
STM-1000-1.0-&S#	1.0	42.5	28.0	37.0	500	500	≤ 25	17.0	3.5
STM-1000-1.2-&P#	1.2	42.5	33.5	35.5	500	600	≤ 25	22.0	3.2
STM-1000-1.2-&S#	1.2	42.5	28.0	37.0	500	600	≤ 25	21.5	3.2
STM-1000-1.5-&P#	1.5	42.5	33.5	35.5	500	750	≤ 25	23.5	2.5
STM-1000-1.75-&P#	1.75	42.5	33.0	45.0	500	875	≤ 25	23.5	2.1
STM-1000-1.75-&S#	1.75	42.5	30.0	45.0	500	875	≤ 25	23.0	2.1
STM-1000-2.0-&P#	2.0	42.5	33.0	45.0	500	1000	≤ 25	26.5	2.3
STM-1000-2.2-&P#	2.2	57.5	30.0	45.0	350	770	≤ 35	26.5	2.7
STM-1000-2.5-&S#	2.5	57.5	30.0	45.0	350	875	≤ 35	28.0	2.9
STM-1000-3.0-&P#	3.0	57.5	35.0	50.0	350	1050	≤ 35	31.0	3.4
STM-1000-3.3-&P#	3.3	57.5	35.0	50.0	350	1155	≤ 35	31.0	2.5
STM-1000-5.0-&S#	5.0	57.5	42.5	56.0	350	1750	≤ 35	33.0	1.6
Un 1200VDC , Urms 500VAC , Us 1800V									
STM-1200-0.22-&P#	0.22	42.5	24.5	27.5	650	143	≤ 25	11.5	12.8
STM-1200-0.22-&S#	0.22	42.5	15.0	26.0	650	143	≤ 25	11.0	12.8
STM-1200-0.33-&P#	0.33	42.5	24.5	27.5	650	210	≤ 25	12.0	8.9
STM-1200-0.33-&S#	0.33	42.5	15.0	26.0	650	210	≤ 25	11.5	8.9
STM-1200-0.39-&P#	0.39	42.5	24.5	27.5	650	254	≤ 25	13.0	7.3
STM-1200-0.39-&S#	0.39	42.5	17.0	28.0	650	254	≤ 25	12.5	7.3
STM-1200-0.47-&P#	0.47	42.5	24.5	27.5	650	306	≤ 25	14.0	7.0
STM-1200-0.47-&S#	0.47	42.5	22.0	30.0	650	306	≤ 25	13.5	7.0
STM-1200-0.56-&S#	0.56	42.5	22.0	30.0	650	364	≤ 25	14.0	5.3
STM-1200-0.56-&P#	0.56	42.5	24.5	27.5	650	364	≤ 25	14.5	5.3
STM-1200-0.68-&P#	0.68	42.5	33.5	35.5	650	442	≤ 25	19.0	4.6
STM-1200-0.68-&S#	0.68	42.5	22.0	30.0	650	442	≤ 25	18.5	4.6
STM-1200-0.82-&P#	0.82	42.5	33.5	35.5	650	533	≤ 25	20.0	3.9
STM-1200-0.82-&S#	0.82	42.5	28.0	37.0	650	533	≤ 25	19.5	3.9
STM-1200-1.0-&P#	1.0	42.5	33.5	35.5	650	650	≤ 25	20.5	3.4
STM-1200-1.0-&S#	1.0	42.5	28.0	37.0	650	650	≤ 25	20.0	3.4
STM-1200-1.2-&P#	1.2	42.5	33.0	45.0	650	780	≤ 25	23.5	3.1

特性参数

订货代码	容量 (μ F)	尺寸(mm)			Du/dt (v/ μ s)	Ipeak (A)	Ls (nH)	Irms@60°C @10KHz (A)	ESR@100KHz (m Ω)
		L	B	H					
Un 1200VDC , Urms 500VAC , Us 1800V									
STM-1200-1.2-&S#	1.2	42.5	30.0	45.0	650	780	≤ 25	23.0	4.2
STM-1200-1.5-&P#	1.5	42.5	33.0	45.0	650	975	≤ 25	25.0	4.1
STM-1200-1.5-&S#	1.5	42.5	30.0	45.0	650	975	≤ 25	24.5	4.1
STM-1200-2.0-&P#	2.0	57.5	30.0	45.0	455	910	≤ 35	27.0	3.6
STM-1200-2.2-&P#	2.2	57.5	35.0	50.0	455	1001	≤ 35	30.0	3.5
STM-1200-2.2-&S#	2.2	57.5	30.0	45.0	455	1001	≤ 35	29.5	3.5
STM-1200-2.5-&P#	2.5	57.5	35.0	50.0	455	1138	≤ 35	31.0	3.2
STM-1200-3.0-&P#	3.0	57.5	35.0	50.0	455	1365	≤ 35	32.0	3.1
STM-1200-4.5-&S#	4.5	57.5	42.5	56.0	455	2047	≤ 35	33.0	3.0
Un 1500VDC , Urms 570VAC , Us 2250V									
STM-1500-0.33-&P#	0.33	42.5	24.5	27.5	800	264	≤ 25	13.5	7.4
STM-1500-0.39-&S#	0.39	42.5	22.0	30.0	800	312	≤ 25	13.5	7.2
STM-1500-0.47-&P#	0.47	42.5	33.5	35.5	800	376	≤ 25	18.0	5.3
STM-1500-0.47-&S#	0.47	42.5	28.0	37.0	800	376	≤ 25	17.5	5.3
STM-1500-0.68-&P#	0.68	42.5	33.5	35.5	800	544	≤ 25	19.5	4.6
STM-1500-0.68-&S#	0.68	42.5	28.0	37.0	800	544	≤ 25	19.0	4.6
STM-1500-0.75-&P#	0.75	42.5	33.5	35.5	800	600	≤ 25	20.5	4.5
STM-1500-1.0-&P#	1.0	42.5	33.0	45.0	800	800	≤ 25	23.0	4.5
STM-1500-1.0-&S#	1.0	42.5	30.0	45.0	800	800	≤ 25	22.5	4.5
STM-1500-1.2-&P#	1.2	57.5	30.0	45.0	560	672	≤ 35	25.0	4.2
STM-1500-1.5-&P#	1.5	57.5	35.0	50.0	560	840	≤ 35	28.0	4.1
STM-1500-1.8-&P#	1.8	57.5	35.0	50.0	560	1008	≤ 35	29.5	4.0
STM-1500-2.5-&S#	2.5	57.5	42.5	56.0	560	1400	≤ 35	31.0	4.0
Un 1700VDC , Urms 575VAC , Us 2550V									
STM-1700-0.22-&P#	0.22	42.5	24.5	27.5	880	194	≤ 25	13.2	10.2
STM-1700-0.22-&S#	0.22	42.5	17.0	28.0	880	194	≤ 25	13.0	10.2
STM-1700-0.33-&P#	0.33	42.5	24.5	27.5	880	290	≤ 25	14.0	7.9
STM-1700-0.33-&S#	0.33	42.5	22.0	30.0	880	290	≤ 25	13.5	7.9
STM-1700-0.47-&P#	0.47	42.5	33.5	35.5	880	413	≤ 25	19.0	5.6
STM-1700-0.47-&S#	0.47	42.5	28.0	37.0	880	413	≤ 25	18.5	5.6
STM-1700-0.56-&P#	0.56	42.5	33.5	35.5	880	492	≤ 25	19.5	5.5
STM-1700-0.56-&S#	0.56	42.5	28.0	37.0	880	492	≤ 25	19.0	5.5
STM-1700-0.68-&P#	0.68	42.5	33.5	35.5	880	598	≤ 25	20.0	5.4
STM-1700-0.82-&P#	0.82	42.5	33.0	45.0	880	721	≤ 25	22.1	5.4
STM-1700-0.82-&S#	0.82	42.5	30.0	45.0	880	721	≤ 25	19.5	5.4
STM-1700-1.0-&P#	1.0	57.5	30.0	45.0	610	610	≤ 35	23.5	5.3
STM-1700-1.2-&P#	1.2	57.5	30.0	45.0	610	732	≤ 35	26.2	4.5
STM-1700-1.5-&P#	1.5	57.5	35.0	50.0	610	915	≤ 35	28.5	3.7
STM-1700-2.2-&S#	2.2	57.5	42.5	56.0	610	1342	≤ 35	30.0	3.5
Un 2000VDC , Urms 630VAC , Us 3000V									
STM-2000-0.10-&P#	0.10	42.5	24.5	27.5	1000	100	≤ 25	8.0	25.7
STM-2000-0.10-&S#	0.10	42.5	15.0	26.0	1000	100	≤ 25	7.5	25.7
STM-2000-0.15-&P#	0.15	42.5	24.5	27.5	1000	150	≤ 25	10.5	14.7
STM-2000-0.15-&S#	0.15	42.5	17.0	28.0	1000	150	≤ 25	10.0	14.7
STM-2000-0.22-&P#	0.22	42.5	24.5	27.5	1000	220	≤ 25	12.0	10.5
STM-2000-0.22-&S#	0.22	42.5	22.0	30.0	1000	220	≤ 25	11.5	10.5
STM-2000-0.33-&P#	0.33	42.5	33.5	35.5	1000	330	≤ 25	16.5	9.5
STM-2000-0.33-&S#	0.33	42.5	28.0	37.0	1000	330	≤ 25	16.0	9.5
STM-2000-0.39-&P#	0.39	42.5	33.5	35.5	1000	390	≤ 25	17.5	6.7
STM-2000-0.39-&S#	0.39	42.5	28.0	37.0	1000	390	≤ 25	17.0	6.7
STM-2000-0.47-&P#	0.47	42.5	33.0	45.0	1000	470	≤ 25	20.5	5.2

特性参数

订货代码	容量 (μF)	尺寸(mm)			Du/dt ($\text{V}/\mu\text{s}$)	Ipeak (A)	Ls (nH)	I _{rms} @60°C @10KHz (A)	ESR@100KHz ($\text{m}\Omega$)
		L	B	H					
Un 2000VDC , Urms 630VAC , Us 3000V									
STM-2000-0.47-&S#	0.47	42.5	28.0	37.0	1000	470	≤ 25	20.0	5.2
STM-2000-0.56-&P#	0.56	42.5	33.0	45.0	1000	560	≤ 25	21.5	4.3
STM-2000-0.68-&P#	0.68	57.5	30.0	45.0	700	476	≤ 35	22.5	5.7
STM-2000-0.82-&P#	0.82	57.5	30.0	45.0	700	574	≤ 35	24.0	4.5
STM-2000-1.0-&P#	1.0	57.5	35.0	50.0	700	700	≤ 35	27.0	4.5
STM-2000-1.2-&P#	1.2	57.5	35.0	50.0	700	840	≤ 35	29.0	4.2
STM-2000-1.8-&S#	1.8	57.5	42.5	56.0	700	1260	≤ 35	31.0	4.0
Un 2500VDC , Urms 700VAC , Us 3750V									
STM-2500-0.10-&P#	0.10	42.5	24.5	27.5	1350	135	≤ 25	9.0	18.7
STM-2500-0.15-&S#	0.15	42.5	22.0	30.0	1350	202	≤ 25	10.5	13.5
STM-2500-0.22-&S#	0.22	42.5	28.0	37.0	1350	297	≤ 25	14.5	10.2
STM-2500-0.33-&S#	0.33	42.5	33.0	45.0	1350	445	≤ 25	18.0	7.8
STM-2500-0.47-&S#	0.47	57.5	30.0	45.0	945	444	≤ 35	22.0	6.2
STM-2500-0.56-&P#	0.56	57.5	30.0	45.0	945	530	≤ 35	22.5	6.2
STM-2500-0.68-&P#	0.68	57.5	35.0	50.0	945	642	≤ 35	25.0	5.5
STM-2500-0.75-&P#	0.75	57.5	35.0	50.0	945	709	≤ 35	25.5	5.1
STM-2500-1.0-&S#	1.0	57.5	42.5	56.0	945	945	≤ 35	28.0	4.8
Un 3000VDC , Urms 750VAC , Us 4500V									
STM-3000-0.047-&P#	0.047	42.5	24.5	27.5	1600	75	≤ 25	7.4	31.6
STM-3000-0.047-&S#	0.047	42.5	15.0	26.0	1600	75	≤ 25	7.0	31.6
STM-3000-0.068-&P#	0.068	42.5	24.5	27.5	1600	108	≤ 25	9.0	22.7
STM-3000-0.068-&S#	0.068	42.5	17.0	28.0	1600	108	≤ 25	8.5	22.7
STM-3000-0.10-&P#	0.10	42.5	33.5	35.5	1600	160	≤ 25	12.0	15.0
STM-3000-0.10-&S#	0.10	42.5	22.0	30.0	1600	160	≤ 25	11.5	15.0
STM-3000-0.15-&P#	0.15	42.5	33.5	35.5	1600	240	≤ 25	14.5	10.8
STM-3000-0.15-&S#	0.15	42.5	28.0	37.0	1600	240	≤ 25	14.0	10.8
STM-3000-0.22-&P#	0.22	42.5	33.0	45.0	1600	352	≤ 25	17.6	6.6
STM-3000-0.22-&S#	0.22	42.5	30.0	45.0	1600	352	≤ 25	17.0	6.6
STM-3000-0.33-&P#	0.33	57.5	30.0	45.0	870	288	≤ 35	21.0	7.5
STM-3000-0.47-&P#	0.47	57.5	35.0	50.0	870	408	≤ 35	23.0	7.5
STM-3000-0.56-&S#	0.56	57.5	35.0	50.0	870	487	≤ 35	23.0	7.4
STM-3000-0.82-&S#	0.82	57.5	42.5	56.0	870	714	≤ 35	26.0	7.0

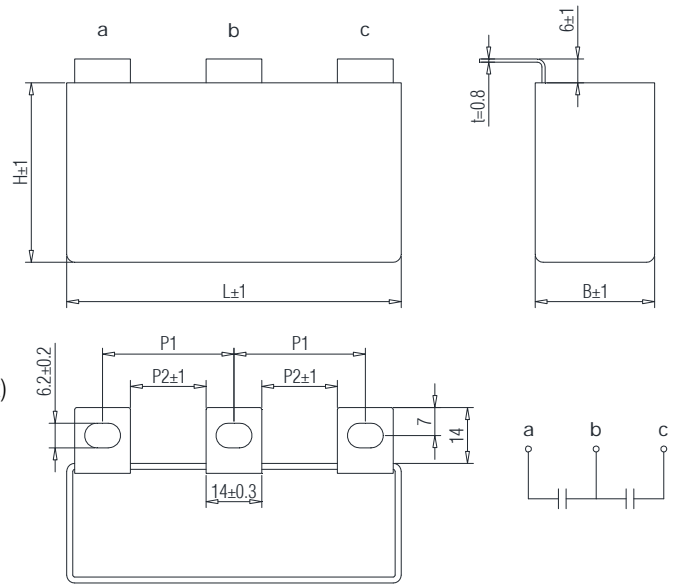
产品特点

引用标准 : IEC 61071
 介质 : 金属化聚丙烯薄膜
 结构 : 干式无感结构, 塑料外壳封装, 树脂填充 (UL94 V-0)

电气特性

工作温度 : -40 °C 至 +105 °C
 容量范围 : 2×0.22 至 2×3.0μF
 额定电压 : 700 至 1700 VDC
 容量偏差 : ±5%, ±10%
 损耗因素 : $\leq 6 \times 10^{-4}$ @ 1KHz, 20±5°C
 预期寿命 : 100,000 小时 @ Un, 70 °C (热点温度)
 极间耐压 : 1.5Un (DC) @ 10s, 20±5°C
 极壳耐压 : (1.5Un+1000)VAC, 最小 3000VAC (10s,50Hz)
 绝缘电阻 : (IR×Cn) 30000s (不超过 30GΩ), 100VDC (20±5°C), 1 分钟

应用 三电平 IGBT 突波吸收 嵌位



安装孔尺寸和焊片间距(mm)

焊片 U 安装孔径 : M6			
P2	P1	P2	P1
11	23-28	19	31-36

特性参数

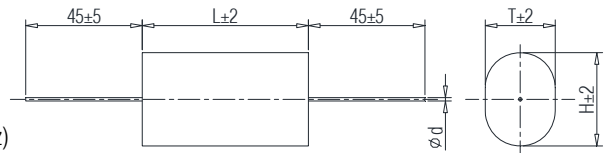
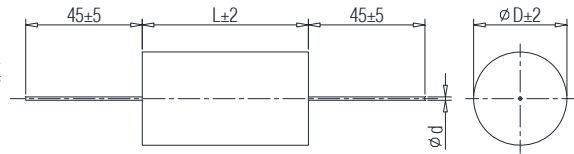
订货代码	容量 (μF)	尺寸(mm)			Du/dt (v/μs)	Ipeak (A)	Ls (nH)	Irms@60°C @10KHz (A)	ESR@100KHz (mΩ)
		L	B	H					
Un 700VDC , Urms 380VAC , Us 1050V									
STM-700-2×1.0-UP#	2×1.0	72.5	30.0	45.0	325	325	≤35	2×16.9	2×3.2
STM-700-2×1.2-UP#	2×1.2	72.5	30.0	45.0	325	390	≤35	2×17.5	2×3.0
STM-700-2×1.5-UP#	2×1.5	72.5	30.0	45.0	325	488	≤35	2×18.5	2×2.7
STM-700-2×2.0-UP#	2×2.0	72.5	30.0	45.0	325	650	≤35	2×19.7	2×2.3
STM-700-2×2.2-UP#	2×2.2	72.5	30.0	45.0	325	715	≤35	2×20.4	2×2.2
STM-700-2×2.5-UP#	2×2.5	84.0	30.0	45.0	325	813	≤35	2×22.5	2×2.0
STM-700-2×3.0-UP#	2×3.0	84.0	30.0	45.0	325	975	≤35	2×23.9	2×1.8
Un 1200VDC , Urms 500VAC , Us 1800V									
STM-1200-2×0.47-UP#	2×0.47	72.5	30.0	45.0	650	306	≤35	2×14.3	2×4.5
STM-1200-2×0.56-UP#	2×0.56	72.5	30.0	45.0	650	364	≤35	2×15.3	2×3.9
STM-1200-2×0.68-UP#	2×0.68	72.5	30.0	45.0	650	442	≤35	2×16.5	2×3.3
STM-1200-2×0.82-UP#	2×0.82	72.5	30.0	45.0	650	533	≤35	2×17.2	2×3.1
STM-1200-2×1.0-UP#	2×1.0	72.5	30.0	45.0	650	650	≤35	2×18.1	2×2.8
STM-1200-2×1.2-UP#	2×1.2	84.0	30.0	45.0	650	780	≤35	2×20.5	2×2.4
STM-1200-2×1.5-UP#	2×1.5	84.0	30.0	45.0	650	975	≤35	2×21.8	2×2.2
Un 1700VDC , Urms 575VAC , Us 2550V									
STM-1700-2×0.22-UP#	2×0.22	72.5	30.0	45.0	880	194	≤35	2×11.6	2×6.7
STM-1700-2×0.33-UP#	2×0.33	72.5	30.0	45.0	880	290	≤35	2×13.2	2×5.2
STM-1700-2×0.47-UP#	2×0.47	72.5	30.0	45.0	880	414	≤35	2×15.1	2×4.0
STM-1700-2×0.56-UP#	2×0.56	72.5	30.0	45.0	880	493	≤35	2×16.2	2×3.5
STM-1700-2×0.68-UP#	2×0.68	72.5	30.0	45.0	880	598	≤35	2×17.2	2×3.1
STM-1700-2×0.82-UP#	2×0.82	84.0	30.0	45.0	880	722	≤35	2×19.6	2×2.7
STM-1700-2×1.0-UP#	2×1.0	84.0	30.0	45.0	880	880	≤35	2×20.3	2×2.5

产品特点

引用标准 : IEC 61071
 介质 : 金属化聚丙烯薄膜
 结构 : 干式无感结构, 聚酯胶带封装, 树脂填充 (UL94 V-0)

电气特性

工作温度 : -40 °C 至 +85 °C
 容量范围 : 0.0068 至 8.5 μ F
 额定电压 : 700 至 3000 VDC
 容量偏差 : $\pm 5\%$, $\pm 10\%$
 损耗因素 : $\leq 6 \times 10^{-4}$ @ 1KHz, 20 ± 5 °C
 预期寿命 : 100,000 小时 @ Un, 70 °C (热点温度)
 极间耐压 : 1.5Un (DC) @ 10s, 20 ± 5 °C
 极壳耐压 : (1.5Un+1000)VAC, 最小 3000VAC (10s,50Hz)
 绝缘电阻 : (IR \times Cn) 30000s (不超过 30G Ω),
 100VDC (20 ± 5 °C), 1 分钟



应用

IGBT 突波吸收 高频谐振

特性参数

订货代码	容量 (μ F)	尺寸 (mm)					Du/dt (v/ μ s)	Ipeak (A)	Irms@60°C @10KHz (A)	ESR@100KHz (m Ω)
		L	圆形 D	扁圆 T H		d				
Un 700VDC , Urms 380VAC , Us 1050V										
STD-700-0.22-32F0	0.22	32		7.9	14.3	0.8	480	106	5.5	13.7
STD-700-0.33-32#	0.33	32	14.2	9.5	17.5	0.8	480	158	6	11.9
STD-700-0.47-32#	0.47	32	16.6	11.9	19.9	0.8	480	226	8	7.5
STD-700-0.68-32#	0.68	32	19.7	14.9	22.9	1.0	480	326	9	5.9
STD-700-0.68-44#	0.68	44	15.6	10.9	18.9	1.0	325	221	9	7.7
STD-700-1.0-44#	1.0	44	18.7	13.9	21.9	1.2	325	325	9	5.7
STD-700-1.5-44#	1.5	44	22.6	16.3	27.5	1.2	325	488	12	5.3
STD-700-2.0-44#	2.0	44	25.9	19.5	30.7	1.2	325	650	12	5.2
STD-700-2.2-44#	2.2	44	27.1	20.7	31.9	1.2	325	715	12	4.8
STD-700-2.2-57#	2.2	57	22.6	16.3	27.5	1.2	240	528	12	4.6
STD-700-2.5-44#	2.5	44	28.8	22.4	33.6	1.2	325	813	12	4.5
STD-700-2.5-57#	2.5	57	24.0	17.7	28.9	1.2	240	600	12	4.5
STD-700-3.0-44#	3.0	44	31.4	25.0	36.2	1.2	325	975	12	4.3
STD-700-3.0-57#	3.0	57	26.2	19.8	31.0	1.2	240	720	12	4.3
STD-700-3.3-44#	3.3	44	32.9	26.4	37.6	1.2	325	1073	12	4.6
STD-700-3.5-57#	3.5	57	28.2	21.8	33.0	1.2	240	840	12	4.2
STD-700-4.0-57#	4.0	57	30.0	23.6	34.8	1.2	240	960	12	4.2
STD-700-4.7-57#	4.7	57	32.5	26.0	37.2	1.2	240	1128	12	4.2
STD-700-5.6-57#	5.6	57	35.4	28.8	40.0	1.2	240	1344	12	3.8
STD-700-6.8-57	6.8	57	38.9			1.2	240	1632	12	3.8
STD-700-8.5-57	8.5	57	43.3			1.2	240	2040	12	3.6
Un 850VDC , Urms 450VAC , Us 1275V										
STD-850-0.10-32F0	0.10	32		5.9	12.3	0.8	700	70	4	22.6
STD-850-0.15-32F0	0.15	32		7.6	14.0	0.8	700	105	5.5	20.3
STD-850-0.22-32#	0.22	32	13.7	9.1	17.1	0.8	700	154	6.5	13.2
STD-850-0.22-44#	0.22	44	11.1	7.1	13.5	0.8	400	88	6.5	12.5
STD-850-0.33-32#	0.33	32	16.4	11.7	19.7	1.0	700	231	8	8.5
STD-850-0.33-44#	0.33	44	13.2	8.5	16.5	1.0	400	132	7.5	11.8
STD-850-0.47-32#	0.47	32	19.3	14.6	22.6	1.0	700	329	9	9.5
STD-850-0.47-44#	0.47	44	15.4	10.7	18.7	1.0	400	188	9	7.5

特性参数

订货代码	容量 (μF)	尺寸 (mm)					Du/dt (v/ μs)	Ipeak (A)	I _{rms} @60°C @10KHz (A)	ESR@100KHz (m Ω)
		L	扁圆							
			D	T	H	d				
Un 850VDC , Urms 450VAC , Us 1275V										
STD-850-0.68-44#	0.68	44	18.2	13.5	21.5	1.0	400	272	9	5.2
STD-850-1.0-44#	1.0	44	21.8	15.6	26.8	1.2	400	400	12	5.7
STD-850-1.5-44#	1.5	44	26.4	20.1	31.3	1.2	400	600	12	5.5
STD-850-2.0-44#	2.0	44	30.4	23.9	35.1	1.2	400	800	12	4.8
STD-850-2.2-44#	2.2	44	31.8	25.3	36.5	1.2	400	880	12	4.8
STD-850-2.2-57#	2.2	57	26.5	20.1	31.3	1.2	290	638	12	3.5
STD-850-2.5-44#	2.5	44	33.8	27.3	38.5	1.2	400	1000	12	3.4
STD-850-2.5-57#	2.5	57	28.1	21.7	32.9	1.2	290	725	12	3.2
STD-850-3.0-57#	3.0	57	30.7	24.3	35.5	1.2	290	870	12	3.0
STD-850-3.3-57#	3.3	57	32.2	25.7	36.9	1.2	290	957	12	2.9
STD-850-4.0-57#	4.0	57	35.3	28.8	40.0	1.2	290	1160	12	2.8
STD-850-4.7-57	4.7	57	38.2			1.2	290	1363	12	2.8
STD-850-5.6-57	5.6	57	41.6			1.2	290	1624	12	2.7
Un 1000VDC , Urms 480VAC , Us 1500V										
STD-1000-0.10-32FO	0.10	32		7.7	12.5	0.8	850	85	5	11.9
STD-1000-0.15-32FO	0.15	32		9.1	15.5	0.8	850	128	6	11.2
STD-1000-0.22-32#	0.22	32	15.6	10.9	18.9	1.0	850	187	7	8.3
STD-1000-0.33-32#	0.33	32	18.7	14.0	22.0	1.0	850	281	9	8.5
STD-1000-0.33-44#	0.33	44	14.9	10.2	18.2	1.0	570	188	9	8.2
STD-1000-0.47-32#	0.47	32	22.1	15.9	27.1	1.0	850	400	9	7.8
STD-1000-0.47-44#	0.47	44	17.5	12.8	20.8	1.0	570	268	9	7.7
STD-1000-0.68-44#	0.68	44	20.8	14.6	25.8	1.0	570	388	9	7.0
STD-1000-1.0-44#	1.0	44	25.0	18.6	29.8	1.2	570	570	12	6.8
STD-1000-1.5-44#	1.5	44	30.3	23.9	35.1	1.2	570	855	12	6.8
STD-1000-1.5-57#	1.5	57	25.2	18.9	30.1	1.2	340	510	12	6.8
STD-1000-2.0-57#	2.0	57	29.0	22.6	33.8	1.2	340	680	12	6.0
STD-1000-2.2-57#	2.2	57	30.3	23.9	35.1	1.2	340	748	12	5.9
STD-1000-3.0-57#	3.0	57	35.3	28.7	39.9	1.2	340	1020	12	5.4
STD-1000-3.3-57#	3.3	57	36.9	32.9	39.3	1.2	340	1122	12	5.1
STD-1000-4.0-57	4.0	57	40.6			1.2	340	1360	12	4.8
STD-1000-4.7-57	4.7	57	43.9			1.2	340	1598	12	4.6
Un 1200VDC , Urms 500VAC , Us 1800V										
STD-1200-0.047-32FO	0.047	32		5.5	10.3	0.8	1100	52	3	36.7
STD-1200-0.068-32FO	0.068	32		6.9	11.7	0.8	1100	75	3.5	27.5
STD-1200-0.10-32FO	0.10	32		8.7	13.5	0.8	1100	110	5	17.9
STD-1200-0.10-44#	0.10	44	9.8	5.8	12.2	0.8	650	65	5	27.3
STD-1200-0.15-32#	0.15	32	14.3	9.6	17.6	1.0	1100	165	6	12.5
STD-1200-0.15-44#	0.15	44	11.5	7.5	13.9	1.0	650	98	6	19.2
STD-1200-0.22-32#	0.22	32	17.0	12.3	20.3	1.0	1100	242	9	10.8
STD-1200-0.22-44#	0.22	44	13.6	8.9	16.9	1.0	650	143	9	12.5
STD-1200-0.33-32#	0.33	32	20.5	15.7	23.7	1.0	1100	363	9	9.8
STD-1200-0.33-44#	0.33	44	16.3	11.6	19.6	1.0	650	215	9	10.2
STD-1200-0.47-44#	0.47	44	19.7	14.4	22.4	1.0	650	306	9	10.2
STD-1200-0.68-44#	0.68	44	22.8	16.5	27.7	1.2	650	442	12	6.3
STD-1200-1.0-44#	1.0	44	27.4	21.0	32.2	1.2	650	650	12	6.2
STD-1200-1.0-57#	1.0	57	22.8	16.5	27.7	1.2	385	385	12	6.8
STD-1200-1.2-44#	1.2	44	29.9	23.4	34.6	1.2	650	780	12	6.0
STD-1200-1.2-57#	1.2	57	24.9	18.5	29.7	1.2	385	462	12	6.4
STD-1200-1.5-44#	1.5	44	33.3	26.8	38.0	1.2	650	975	12	6.7
STD-1200-1.5-57#	1.5	57	27.7	21.3	32.5	1.2	385	578	12	6.0
STD-1200-2.0-57#	2.0	57	31.8	25.3	36.5	1.2	385	770	12	5.6
STD-1200-2.2-57#	2.2	57	33.3	26.8	38.0	1.2	385	847	12	5.5

特性参数

订货代码	容量 (μF)	尺寸 (mm)					Du/dt ($\text{v}/\mu\text{s}$)	Ipeak (A)	I _{rms} @60°C @10KHz (A)	ESR@100KHz ($\text{m}\Omega$)	
		L	圆形		扁圆						d
			D	T	H						
Un 1200VDC , Urms 500VAC , Us 1800V											
STD-1200-2.5-57#	2.5	57	35.4	28.9	40.1	1.2	385	963	12	5.3	
STD-1200-3.0-57	3.0	57	38.7			1.2	385	1155	12	5.0	
STD-1200-3.3-57	3.3	57	40.6			1.2	385	1270	12	4.7	
STD-1200-4.0-57	4.0	57	44.6			1.2	385	1540	12	4.5	
Un 1500VDC , Urms 570VAC , Us 2250V											
STD-1500-0.068-32FO	0.068	32		8.5	14.9	0.8	1225	83	4	24.3	
STD-1500-0.10-32#	0.10	32	14.7	10.0	18.0	0.8	1225	123	5.5	15.6	
STD-1500-0.15-32#	0.15	32	17.7	13.0	21.0	1.0	1225	184	7	7.2	
STD-1500-0.22-32#	0.22	32	21.1	14.9	26.1	1.0	1225	270	9	6.3	
STD-1500-0.22-44#	0.22	44	16.8	12.1	20.1	1.0	800	176	9	10.7	
STD-1500-0.33-44#	0.33	44	20.2	15.5	23.5	1.0	800	264	9	9.3	
STD-1500-0.47-44#	0.47	44	23.9	17.6	28.8	1.2	800	376	11	5.6	
STD-1500-0.68-44#	0.68	44	28.5	22.1	33.3	1.2	800	544	12	5.3	
STD-1500-1.0-44#	1.0	44	34.4	27.9	39.1	1.2	800	800	12	4.8	
STD-1500-1.0-57#	1.0	57	28.6	22.2	33.4	1.2	570	570	12	4.8	
STD-1500-1.2-57#	1.2	57	31.2	24.8	36.0	1.2	570	684	12	4.4	
STD-1500-1.5-57#	1.5	57	34.8	28.3	39.5	1.2	570	855	12	4.0	
STD-1500-2.0-57	2.0	57	40.0			1.2	570	1140	12	3.8	
STD-1500-2.2-57	2.2	57	41.9			1.2	570	1254	12	3.6	
STD-1500-2.5-57	2.5	57	44.6			1.2	570	1425	12	3.5	
Un 1700VDC , Urms 575VAC , Us 2550V											
STD-1700-0.033-32FO	0.033	32		5.9	12.3	0.8	1350	45	3.9	47.5	
STD-1700-0.047-32FO	0.047	32		7.4	13.8	0.8	1350	63	4.0	30.4	
STD-1700-0.068-32#	0.068	32	13.3	8.7	16.7	0.8	1350	92	4.1	23.9	
STD-1700-0.10-32#	0.10	32	15.8	11.1	19.1	0.8	1350	135	5.7	17.3	
STD-1700-0.15-32#	0.15	32	19.1	14.3	22.3	1.0	1350	203	8.0	11.8	
STD-1700-0.22-32#	0.22	32	22.8	16.5	27.7	1.0	1350	297	9.0	6.6	
STD-1700-0.22-44#	0.22	44	18.1	13.3	21.3	1.0	880	194	9.0	10.4	
STD-1700-0.33-44#	0.33	44	21.8	15.6	26.8	1.0	880	290	9.0	6.9	
STD-1700-0.47-44#	0.47	44	25.8	19.5	30.7	1.2	880	414	12	4.7	
STD-1700-0.68-44#	0.68	44	30.8	24.4	35.6	1.2	880	598	12	4.5	
STD-1700-1.0-44#	1.0	44	37.2	30.6	41.8	1.2	880	880	12	3.8	
STD-1700-1.0-57#	1.0	57	30.9	24.4	35.6	1.2	610	610	12	3.6	
STD-1700-1.2-57#	1.2	57	33.8	27.2	38.4	1.2	610	732	12	3.5	
STD-1700-1.5-57	1.5	57	37.6			1.2	610	915	12	3.5	
STD-1700-2.0-57	2.0	57	43.3			1.2	610	1220	12	3.4	
Un 2000VDC , Urms 630VAC , Us 3000V											
STD-2000-0.022-32FO	0.022	32		5.4	11.8	0.8	1750	39	2.5	68.7	
STD-2000-0.033-32FO	0.033	32		7.0	13.4	0.8	1750	58	3.5	52.7	
STD-2000-0.047-32FO	0.047	32		8.1	16.1	0.8	1750	82	4.5	34.8	
STD-2000-0.047-44#	0.047	44	10.4	6.4	12.8	0.8	1000	47	4	45.8	
STD-2000-0.068-32#	0.068	32	15.0	10.3	18.3	1.0	1750	119	5.5	23.5	
STD-2000-0.068-44#	0.068	44	12.1	8.1	14.5	0.8	1000	68	5.5	16.3	
STD-2000-0.10-32#	0.10	32	17.8	13.1	21.1	1.0	1750	175	7.5	13.8	
STD-2000-0.10-44#	0.10	44	14.2	9.6	17.6	1.0	1000	100	7	12.4	
STD-2000-0.15-44#	0.15	44	17.1	12.4	20.4	1.0	1000	150	9	8.6	
STD-2000-0.22-44#	0.22	44	20.4	15.6	23.6	1.0	1000	220	9	8.5	
STD-2000-0.33-44#	0.33	44	24.7	18.4	29.6	1.2	1000	330	12	5.2	
STD-2000-0.47-44#	0.47	44	29.9	23.4	34.6	1.2	1000	470	12	5.0	
STD-2000-0.56-44#	0.56	44	32.4	25.9	37.1	1.2	1000	560	12	4.9	
STD-2000-0.56-57#	0.56	57	26.5	20.1	31.3	1.2	640	358	12	5.5	
STD-2000-0.68-57#	0.68	57	29.1	22.7	33.9	1.2	640	435	12	5.1	

特性参数

订货代码	容量 (μF)	尺寸 (mm)					Du/dt ($\text{V}/\mu\text{s}$)	I _{peak} (A)	I _{rms} @60°C @10KHz (A)	ESR@100KHz ($\text{m}\Omega$)
		L	圆形	扁圆		d				
			D	T	H					
Un 2000VDC , Urms 630VAC , Us 3000V										
STD-2000-1.0-57#	1.0	57	35.1	28.6	39.8	1.2	640	640	12	4.8
STD-2000-1.2-57	1.2	57	38.3			1.2	640	768	12	4.8
STD-2000-1.5-57	1.5	57	42.8			1.2	640	960	12	4.6
Un 2500VDC , Urms 700VAC , Us 3750V										
STD-2500-0.022-32FO	0.022	32		6.9	13.3	0.8	2150	47	3.5	40.5
STD-2500-0.033-32FO	0.033	32		8.2	16.2	0.8	2150	71	4	36.9
STD-2500-0.047-32#	0.047	32	15.0	10.3	18.3	0.8	2150	101	5	23.8
STD-2500-0.068-32#	0.068	32	17.3	13.0	21.0	1.0	2150	146	6.5	21.5
STD-2500-0.10-32#	0.10	32	21.3	15.0	26.2	1.0	2150	215	8.5	12.5
STD-2500-0.10-44#	0.10	44	16.9	12.1	20.1	1.0	1350	135	8.5	17.7
STD-2500-0.15-44#	0.15	44	20.4	15.6	23.6	1.0	1350	203	9	11.6
STD-2500-0.22-44#	0.22	44	24.4	18.1	29.3	1.2	1350	297	11	10.3
STD-2500-0.33-44#	0.33	44	29.6	23.2	34.4	1.2	1350	446	12	10.0
STD-2500-0.33-57#	0.33	57	24.7	18.3	29.5	1.2	880	290	12	6.8
STD-2500-0.47-57#	0.47	57	29.2	22.8	34.0	1.2	880	414	12	6.5
STD-2500-0.68-57#	0.68	57	34.9	28.4	39.6	1.2	880	598	12	6.0
STD-2500-0.82-57	0.82	57	38.3			1.2	880	722	12	5.6
STD-2500-1.0-57	1.0	57	42.2			1.2	880	880	12	5.4
Un 3000VDC , Urms 750VAC , Us 4500V										
STD-3000-0.0068-32FO	0.0068	32		5.1	9.9	0.8	2750	19	1.5	104.0
STD-3000-0.010-32FO	0.010	32		5.9	12.3	0.8	2750	28	2	79.4
STD-3000-0.015-32FO	0.015	32		7.1	13.5	0.8	2750	41	3	75.5
STD-3000-0.022-32#	0.022	32	13.1	8.4	16.4	0.8	2750	61	4	63.9
STD-3000-0.033-32#	0.033	32	15.7	11.0	19.0	1.0	2750	91	5	33.9
STD-3000-0.047-32#	0.047	32	18.4	13.7	21.7	1.0	2750	129	6.5	25.7
STD-3000-0.047-44#	0.047	44	14.7	10.0	18.0	1.0	1600	75	6	37.4
STD-3000-0.068-44#	0.068	44	17.3	12.6	20.6	1.0	1600	109	8	25.1
STD-3000-0.10-44#	0.10	44	20.7	14.5	25.7	1.2	1600	160	11	17.4
STD-3000-0.15-44#	0.15	44	25.1	18.8	30.0	1.2	1600	240	12	16.8
STD-3000-0.22-44#	0.22	44	30.2	23.7	34.9	1.2	1600	352	12	17.4
STD-3000-0.22-57#	0.22	57	25.1	18.8	30.0	1.2	990	218	12	12.6
STD-3000-0.33-57#	0.33	57	30.5	24.1	35.3	1.2	990	327	12	8.0
STD-3000-0.39-57#	0.39	57	33.1	26.6	37.8	1.2	990	386	12	7.4
STD-3000-0.47-57	0.47	57	36.3			1.2	990	465	12	5.7
STD-3000-0.68-57	0.68	57	43.4			1.2	990	673	12	5.5

产品特点

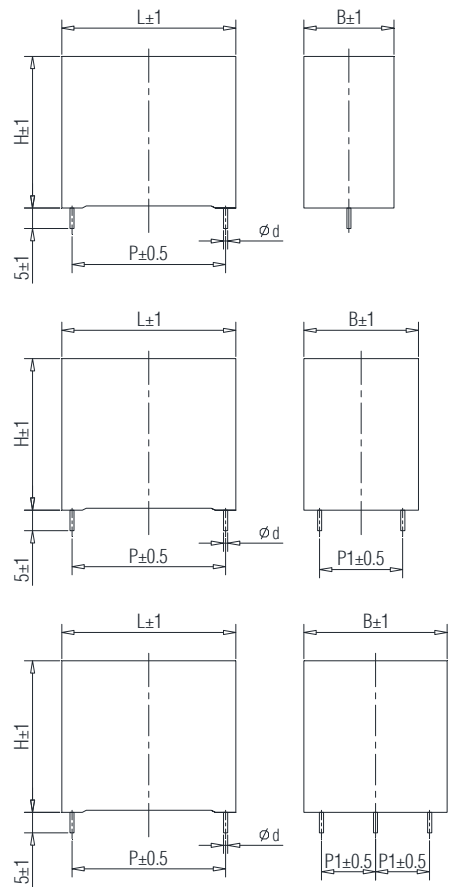
引用标准 : IEC 61071
 介质 : 金属化聚丙烯薄膜
 结构 : 干式无感结构, 塑料外壳封装, 树脂填充 (UL94 V-0)

电气特性

工作温度 : -40 °C 至 +105 °C
 容量范围 : 0.0047 至 5.6μF
 额定电压 : 700 至 3000 VDC
 容量偏差 : ±5%, ±10%
 损耗因素 : $\leq 6 \times 10^{-4}$ @ 1KHz, 20±5°C
 预期寿命 : 100,000 小时 @ Un, 70 °C(热点温度)
 极间耐压 : 1.5Un (DC) @ 10s, 20±5°C
 极壳耐压 : (1.5Un+1000)VAC, 最小 3000VAC (10s,50Hz)
 绝缘电阻 : (IR×Cn) 30000s (不超过 30GΩ), 100VDC (20±5°C), 1 分钟

电气特性

IGBT 突波吸收 高频谐振



特性参数

订货代码	容量 (μF)	尺寸 (mm)						Du/dt (v/μs)	Ipeak (A)	Irms@60°C @10KHz (A)	ESR@100KHz (mΩ)
		L	B	H	P	P1	d				
Un 700VDC , Urms 380VAC , Us 1050V											
STC-700-0.10-2T	0.10	26.5	8.5	17.0	22.5		0.8	600	60	3.6	21.3
STC-700-0.15-2T	0.15	26.5	10.0	18.5	22.5		0.8	600	90	5	16.3
STC-700-0.22-2T	0.22	26.5	11.0	20.0	22.5		0.8	600	132	6.5	11.5
STC-700-0.22-2V	0.22	31.0	11.0	20.0	27.5		1.0	485	107	6.5	15.2
STC-700-0.33-2V	0.33	31.0	13.0	22.0	27.5		1.0	485	160	8.5	11.2
STC-700-0.47-2V	0.47	31.0	15.0	24.5	27.5		1.0	485	228	9	6.9
STC-700-0.68-2V	0.68	31.0	17.0	28.0	27.5		1.2	485	330	12	5.5
STC-700-0.68-4V	0.68	31.0	17.0	28.0	27.5	5.1	1.2	485	330	16	4.6
STC-700-0.82-4V	0.82	31.0	17.0	28.0	27.5	10.2	1.2	485	398	12	4.8
STC-700-0.82-2F	0.82	42.5	15.0	26.0	37.5		1.2	325	267	12	5.1
STC-700-1.0-2V	1.0	31.0	22.0	31.0	27.5		1.2	485	485	12	4.8
STC-700-1.0-4V	1.0	31.0	22.0	31.0	27.5	10.2	1.2	485	485	19	3.9
STC-700-1.0-2F	1.0	42.5	17.0	28.0	37.5		1.2	325	325	12	4.9
STC-700-1.5-2F	1.5	42.5	22.0	30.0	37.5		1.2	325	488	12	4.8
STC-700-1.5-4F	1.5	42.5	22.0	30.0	37.5	10.2	1.2	325	488	19	5.2
STC-700-2.0-2F	2.0	42.5	28.0	37.0	37.5		1.2	325	650	12	4.5
STC-700-2.0-4F	2.0	42.5	28.0	37.0	37.5	10.2	1.2	325	650	22	4.3
STC-700-2.2-2F	2.2	42.5	28.0	37.0	37.5		1.2	325	715	12	4.2
STC-700-2.2-4F	2.2	42.5	28.0	37.0	37.5	20.3	1.2	325	715	22	3.8
STC-700-3.0-2F	3.0	42.5	30.0	45.0	37.5		1.2	325	975	12	3.9
STC-700-3.0-4F	3.0	42.5	30.0	45.0	37.5	20.3	1.2	325	975	22	3.6
STC-700-3.0-6F	3.0	42.5	30.0	45.0	37.5	10.2	1.2	325	975	27	3.5

特性参数

订货代码	容量 (μF)	尺寸 (mm)						Du/dt ($\text{V}/\mu\text{s}$)	I _{peak} (A)	I _{rms} @60°C @10KHz (A)	ESR@100KHz ($\text{m}\Omega$)
		L	B	H	P	P1	d				
Un 700VDC , Urms 380VAC , Us 1050V											
STC-700-3.3-2F	3.3	42.5	30.0	45.0	37.5		1.2	325	1073	12	3.8
STC-700-3.3-4F	3.3	42.5	30.0	45.0	37.5	20.3	1.2	325	1073	22	3.6
STC-700-3.3-6F	3.3	42.5	30.0	45.0	37.5	10.2	1.2	325	1073	27	3.2
STC-700-4.0-2F	4.0	42.5	33.0	45.0	37.5		1.2	325	1300	13	3.2
STC-700-4.0-4F	4.0	42.5	33.0	45.0	37.5	20.3	1.2	325	1300	23	3.1
STC-700-4.0-6F	4.0	42.5	33.0	45.0	37.5	10.2	1.2	325	1300	28	3.0
STC-700-4.0-2G	4.0	57.5	30.0	45.0	52.5		1.2	200	800	12	4.5
STC-700-4.0-4G	4.0	57.5	30.0	45.0	52.5	20.3	1.2	200	800	22	3.6
STC-700-4.0-6G	4.0	57.5	30.0	45.0	52.5	10.2	1.2	200	800	27	3.6
STC-700-4.7-2G	4.7	57.5	30.0	45.0	52.5		1.2	200	940	12	4.5
STC-700-4.7-4G	4.7	57.5	30.0	45.0	52.5	20.3	1.2	200	940	22	4.2
STC-700-4.7-6G	4.7	57.5	30.0	45.0	52.5	10.2	1.2	200	940	31	3.9
STC-700-5.0-2G	5.0	57.5	30.0	45.0	52.5		1.2	200	1000	12	4.4
STC-700-5.0-4G	5.0	57.5	30.0	45.0	52.5	20.3	1.2	200	1000	22	4.1
STC-700-5.0-6G	5.0	57.5	30.0	45.0	52.5	10.2	1.2	200	1000	31	4.1
STC-700-5.6-2G	5.6	57.5	35.0	50.0	52.5		1.2	200	1120	12	4.1
STC-700-5.6-4G	5.6	57.5	35.0	50.0	52.5	20.3	1.2	200	1120	22	3.8
STC-700-5.6-6G	5.6	57.5	35.0	50.0	52.5	10.2	1.2	200	1120	31	3.6
Un 850VDC , Urms 450VAC , Us 1275V											
STC-850-0.068-2T	0.068	26.5	8.5	17.0	22.5		0.8	850	58	3.5	21.5
STC-850-0.10-2T	0.10	26.5	10.0	18.5	22.5		0.8	850	85	4.5	18.7
STC-850-0.15-2T	0.15	26.5	11.0	20.0	22.5		0.8	850	128	6.5	11.2
STC-850-0.15-2V	0.15	31.0	11.0	20.0	27.5		0.8	700	105	6.5	12.9
STC-850-0.22-2V	0.22	31.0	13.0	22.0	27.5		1.0	700	154	8	9.6
STC-850-0.33-2V	0.33	31.0	15.0	24.5	27.5		1.0	700	231	9	7.5
STC-850-0.47-2V	0.47	31.0	18.0	33.0	27.5		1.2	700	329	12	5.9
STC-850-0.47-4V	0.47	31.0	18.0	33.0	27.5	10.2	1.2	700	329	16	5.1
STC-850-0.56-2V	0.56	31.0	18.0	33.0	27.5		1.2	700	392	18	4.7
STC-850-0.56-4V	0.56	31.0	18.0	33.0	27.5	10.2	1.2	700	392	12	5.6
STC-850-0.56-2F	0.56	42.5	15.0	26.0	37.5		1.2	400	224	12	5.7
STC-850-0.68-2V	0.68	31.0	22.0	31.0	27.5		1.2	700	476	12	5.1
STC-850-0.68-4V	0.68	31.0	22.0	31.0	27.5	10.2	1.2	700	476	19	4.2
STC-850-0.68-2F	0.68	42.5	17.0	28.0	37.5		1.2	400	272	12	5.4
STC-850-1.0-2F	1.0	42.5	22.0	30.0	37.5		1.2	400	400	12	5.1
STC-850-1.0-4F	1.0	42.5	22.0	30.0	37.5	10.2	1.2	400	400	21	4.1
STC-850-1.5-2F	1.5	42.5	28.0	37.0	37.5		1.2	400	600	12	4.2
STC-850-1.5-4F	1.5	42.5	28.0	37.0	37.5	20.3	1.2	400	600	22	3.4
STC-850-2.0-2F	2.0	42.5	30.0	45.0	37.5		1.2	400	800	12	3.8
STC-850-2.0-4F	2.0	42.5	30.0	45.0	37.5	20.3	1.2	400	800	22	3.2
STC-850-2.0-6F	2.0	42.5	30.0	45.0	37.5	10.2	1.2	400	800	26	3.2
STC-850-2.2-2F	2.2	42.5	30.0	45.0	37.5		1.2	400	880	12	3.8
STC-850-2.2-4F	2.2	42.5	30.0	45.0	37.5	20.3	1.2	400	880	22	3.2
STC-850-2.2-6F	2.2	42.5	30.0	45.0	37.5	10.2	1.2	400	880	27	3.2
STC-850-2.5-2G	2.5	57.5	30.0	45.0	52.5		1.2	275	688	12	4.5
STC-850-2.5-4G	2.5	57.5	30.0	45.0	52.5	20.3	1.2	275	688	22	3.5
STC-850-2.5-6G	2.5	57.5	30.0	45.0	52.5	10.2	1.2	275	688	27	3.5
STC-850-3.0-2G	3.0	57.5	30.0	45.0	52.5		1.2	275	825	12	4.1
STC-850-3.0-4G	3.0	57.5	30.0	45.0	52.5	20.3	1.2	275	825	22	3.2
STC-850-3.0-6G	3.0	57.5	30.0	45.0	52.5	10.2	1.2	275	825	27	3.2
STC-850-3.3-2G	3.3	57.5	30.0	45.0	52.5		1.2	275	908	12	4.1
STC-850-3.3-4G	3.3	57.5	30.0	45.0	52.5	20.3	1.2	275	908	22	3.2
STC-850-3.3-6G	3.3	57.5	30.0	45.0	52.5	10.2	1.2	275	908	29	3.2

特性参数

订货代码	容量 (μ F)	尺寸 (mm)						Du/dt (v/ μ s)	Ipeak (A)	Irms@60°C @10KHz (A)	ESR@100KHz (m Ω)
		L	B	H	P	P1	d				
Un 850VDC , Urms 450VAC , Us 1275V											
STC-850-4.0-2G	4.0	57.5	35.0	50.0	52.5		1.2	275	1100	12	3.8
STC-850-4.0-4G	4.0	57.5	35.0	50.0	52.5	20.3	1.2	275	1100	22	3.0
STC-850-4.0-6G	4.0	57.5	35.0	50.0	52.5	10.2	1.2	275	1100	28	2.8
STC-850-4.7-2G	4.7	57.5	35.0	50.0	52.5		1.2	275	1293	12	3.5
STC-850-4.7-4G	4.7	57.5	35.0	50.0	52.5	20.3	1.2	275	1293	22	2.7
STC-850-4.7-6G	4.7	57.5	35.0	50.0	52.5	10.2	1.2	275	1293	30	2.5
Un 1000VDC , Urms 480VAC , Us 1500V											
STC-1000-0.047-2T	0.047	26.5	7.0	16.0	22.5		0.8	1000	47	3	29.7
STC-1000-0.068-2T	0.068	26.5	8.5	17.0	22.5		0.8	1000	68	2.3	23.5
STC-1000-0.10-2T	0.10	26.5	11.0	20.0	22.5		0.8	1000	100	5	14.5
STC-1000-0.10-2V	0.10	31.0	9.0	18.0	27.5		0.8	850	85	5	17.8
STC-1000-0.15-2T	0.15	26.5	12.0	22.0	22.5		0.8	1000	150	6.5	11.3
STC-1000-0.15-2V	0.15	31.0	11.0	20.0	27.5		0.8	850	128	6.5	12.5
STC-1000-0.22-2V	0.22	31.0	15.0	24.5	27.5		1.0	850	187	9	9.8
STC-1000-0.33-2V	0.33	31.0	17.0	28.0	27.5		1.0	850	281	9	8.3
STC-1000-0.47-2V	0.47	31.0	18.0	33.0	27.5		1.2	850	400	12	5.6
STC-1000-0.47-4V	0.47	31.0	18.0	33.0	27.5	10.2	1.2	850	400	16	4.7
STC-1000-0.47-2F	0.47	42.5	17.0	28.0	37.5		1.2	570	268	12	7.0
STC-1000-0.56-2F	0.56	42.5	17.0	28.0	37.5		1.2	570	319	12	6.3
STC-1000-0.68-2F	0.68	42.5	22.0	30.0	37.5		1.2	570	388	12	5.9
STC-1000-0.68-4F	0.68	42.5	22.0	30.0	37.5	10.2	1.2	570	388	19	5.1
STC-1000-0.82-2F	0.82	42.5	22.0	30.0	37.5		1.2	570	467	12	5.4
STC-1000-0.82-4F	0.82	42.5	22.0	30.0	37.5	10.2	1.2	570	467	22	4.8
STC-1000-1.0-2F	1.0	42.5	28.0	37.0	37.5		1.2	570	570	12	5.1
STC-1000-1.0-4F	1.0	42.5	28.0	37.0	37.5	10.2	1.2	570	570	22	4.1
STC-1000-1.2-2F	1.2	42.5	28.0	37.0	37.5		1.2	570	684	12	5.1
STC-1000-1.2-4F	1.2	42.5	28.0	37.0	37.5	10.2	1.2	570	684	22	5.1
STC-1000-1.5-2F	1.5	42.5	30.0	45.0	37.5		1.2	570	855	12	5.1
STC-1000-1.5-4F	1.5	42.5	30.0	45.0	37.5	20.3	1.2	570	855	22	3.5
STC-1000-1.5-6F	1.5	42.5	30.0	45.0	37.5	10.2	1.2	570	855	22.5	3.5
STC-1000-2.0-2F	2.0	42.5	33.0	45.0	37.5		1.2	570	1140	11	4.7
STC-1000-2.0-4F	2.0	42.5	33.0	45.0	37.5	20.3	1.2	570	1140	21	4.1
STC-1000-2.0-6F	2.0	42.5	33.0	45.0	37.5	10.2	1.2	570	1140	26	3.8
STC-1000-2.0-2G	2.0	57.5	30.0	45.0	52.5		1.2	320	640	12	4.5
STC-1000-2.0-4G	2.0	57.5	30.0	45.0	52.5	20.3	1.2	320	640	22	3.9
STC-1000-2.0-6G	2.0	57.5	30.0	45.0	52.5	10.2	1.2	320	640	27	3.9
STC-1000-2.2-2G	2.2	57.5	30.0	45.0	52.5		1.2	320	704	12	3.9
STC-1000-2.2-4G	2.2	57.5	30.0	45.0	52.5	20.3	1.2	320	704	22	4.7
STC-1000-2.2-6G	2.2	57.5	30.0	45.0	52.5	10.2	1.2	320	704	26	3.8
STC-1000-3.0-2G	3.0	57.5	35.0	50.0	52.5		1.2	320	960	12	4.1
STC-1000-3.0-4G	3.0	57.5	35.0	50.0	52.5	20.3	1.2	320	960	22	3.4
STC-1000-3.0-6G	3.0	57.5	35.0	50.0	52.5	10.2	1.2	320	960	29	3.4
STC-1000-3.3-2G	3.3	57.5	35.0	50.0	52.5		1.2	320	1056	12	4.1
STC-1000-3.3-4G	3.3	57.5	35.0	50.0	52.5	20.3	1.2	320	1056	22	4.5
STC-1000-3.3-6G	3.3	57.5	35.0	50.0	52.5	10.2	1.2	320	1056	30	4.5
Un 1200VDC , Urms 500VAC , Us 1800V											
STC-1200-0.033-2T	0.033	26.5	7.0	16.0	22.5		0.8	1300	43	3	33.8
STC-1200-0.047-2T	0.047	26.5	8.5	17.0	22.5		0.8	1300	61	3.5	26.5
STC-1200-0.068-2T	0.068	26.5	10.0	18.5	22.5		0.8	1300	88	4	22.4
STC-1200-0.068-2V	0.068	31.0	9.0	18.0	27.5		0.8	1100	75	4	21.5
STC-1200-0.10-2T	0.10	26.5	12.0	22.0	22.5		0.8	1300	130	5.5	14.6
STC-1200-0.10-2V	0.10	31.0	11.0	20.0	27.5		0.8	1100	110	5.5	15.8

特性参数

订货代码	容量 (μF)	尺寸 (mm)						Du/dt ($\text{V}/\mu\text{s}$)	I _{peak} (A)	I _{rms} @60°C @10KHz (A)	ESR@100KHz ($\text{m}\Omega$)
		L	B	H	P	P1	d				
Un 1200VDC , Urms 500VAC , Us 1800V											
STC-1200-0.15-2V	0.15	31.0	13.0	22.0	27.5		1.0	1100	165	7	12.5
STC-1200-0.22-2V	0.22	31.0	15.0	24.5	27.5		1.0	1100	242	9	12.5
STC-1200-0.33-2V	0.33	31.0	18.0	33.0	27.5		1.2	1100	363	12	6.5
STC-1200-0.33-4V	0.33	31.0	18.0	33.0	27.5	10.2	1.2	1100	363	15.5	5.6
STC-1200-0.33-2F	0.33	42.5	15.0	26.0	37.5		1.2	650	215	12	8.3
STC-1200-0.47-2V	0.47	31.0	22.0	31.0	27.5		1.2	1100	517	12	5.1
STC-1200-0.47-4V	0.47	31.0	22.0	31.0	27.5	10.2	1.2	1100	517	19	4.2
STC-1200-0.47-2F	0.47	42.5	17.0	28.0	37.5		1.2	650	306	12	7.2
STC-1200-0.68-2F	0.68	42.5	22.0	30.0	37.5		1.2	650	442	12	5.9
STC-1200-0.68-4F	0.68	42.5	22.0	30.0	37.5	10.2	1.2	650	442	20	5.2
STC-1200-1.0-2F	1.0	42.5	28.0	37.0	37.5		1.2	650	650	12	5.2
STC-1200-1.0-4F	1.0	42.5	28.0	37.0	37.5	20.3	1.2	650	650	21	4.3
STC-1200-1.2-2F	1.2	42.5	28.0	37.0	37.5		1.2	650	780	12	5.1
STC-1200-1.2-4F	1.2	42.5	28.0	37.0	37.5	20.3	1.2	650	780	22	3.8
STC-1200-1.5-2F	1.5	42.5	30.0	45.0	37.5		1.2	650	975	12	4.2
STC-1200-1.5-4F	1.5	42.5	30.0	45.0	37.5	20.3	1.2	650	975	22	3.2
STC-1200-1.5-6F	1.5	42.5	30.0	45.0	37.5	10.2	1.2	650	975	27	3.2
STC-1200-2.0-2G	2.0	57.5	30.0	45.0	52.5		1.2	350	700	12	4.5
STC-1200-2.0-4G	2.0	57.5	30.0	45.0	52.5	20.3	1.2	350	700	22	3.6
STC-1200-2.0-6G	2.0	57.5	30.0	45.0	52.5	10.2	1.2	350	700	27	3.6
STC-1200-2.2-2G	2.2	57.5	30.0	50.0	52.5		1.2	350	770	12	4.5
STC-1200-2.2-4G	2.2	57.5	30.0	50.0	52.5	20.3	1.2	350	770	22	3.5
STC-1200-2.2-6G	2.2	57.5	30.0	50.0	52.5	10.2	1.2	350	770	30	3.5
STC-1200-2.5-2G	2.5	57.5	35.0	50.0	52.5		1.2	350	875	12	4.1
STC-1200-2.5-4G	2.5	57.5	35.0	50.0	52.5	20.3	1.2	350	875	22	3.2
STC-1200-2.5-6G	2.5	57.5	35.0	50.0	52.5	10.2	1.2	350	875	30	3.2
STC-1200-3.0-2G	3.0	57.5	35.0	50.0	52.5		1.2	350	1050	12	3.5
STC-1200-3.0-4G	3.0	57.5	35.0	50.0	52.5	20.3	1.2	350	1050	22	3.2
STC-1200-3.0-6G	3.0	57.5	35.0	50.0	52.5	10.2	1.2	350	1050	29	3.2
Un 1500VDC , Urms 570VAC , Us 2250V											
STC-1500-0.022-2T	0.022	26.5	7.0	16.0	22.5		0.8	1500	33	2.5	44.5
STC-1500-0.033-2T	0.033	26.5	8.5	17.0	22.5		0.8	1500	50	3	33.0
STC-1500-0.047-2T	0.047	26.5	10.0	18.5	22.5		0.8	1500	71	3.5	24.8
STC-1500-0.047-2V	0.047	31.0	9.0	18.0	27.5		0.8	1225	58	3.5	27.3
STC-1500-0.068-2T	0.068	26.5	12.0	22.0	22.5		0.8	1500	102	5	19.5
STC-1500-0.068-2V	0.068	31.0	11.0	20.0	27.5		0.8	1225	83	5	20.7
STC-1500-0.10-2V	0.10	31.0	13.0	22.0	27.5		0.8	1225	123	6.5	15.3
STC-1500-0.15-2V	0.15	31.0	17.0	28.0	27.5		1.0	1225	184	8	10.6
STC-1500-0.22-2V	0.22	31.0	18.0	33.0	27.5		1.2	1225	270	12	7.6
STC-1500-0.22-2F	0.22	42.5	17.0	28.0	37.5		1.2	800	176	12	10.2
STC-1500-0.33-2F	0.33	42.5	22.0	30.0	37.5		1.2	800	264	12	6.2
STC-1500-0.33-4F	0.33	42.5	22.0	30.0	37.5	10.2	1.2	800	264	18	5.1
STC-1500-0.39-2F	0.39	42.5	22.0	30.0	37.5		1.2	800	312	12	6.2
STC-1500-0.39-4F	0.39	42.5	22.0	30.0	37.5	10.2	1.2	800	312	18	4.6
STC-1500-0.47-2F	0.47	42.5	28.0	37.0	37.5		1.2	800	376	12	6.6
STC-1500-0.47-4F	0.47	42.5	28.0	37.0	37.5	10.2	1.2	800	376	22	5.7
STC-1500-0.68-2F	0.68	42.5	28.0	37.0	37.5		1.2	800	544	12	5.7
STC-1500-0.68-4F	0.68	42.5	28.0	37.0	37.5	10.2	1.2	800	544	22	4.8
STC-1500-1.0-2F	1.0	42.5	30.0	45.0	37.5		1.2	800	800	12	4.8
STC-1500-1.0-4F	1.0	42.5	30.0	45.0	37.5	20.3	1.2	800	800	22	3.9
STC-1500-1.2-2G	1.2	57.5	30.0	45.0	52.5		1.2	500	600	12	5.3
STC-1500-1.2-4G	1.2	57.5	30.0	45.0	52.5	20.3	1.2	500	600	22	4.5

特性参数

订货代码	容量 (μF)	尺寸 (mm)						Du/dt ($\text{V}/\mu\text{s}$)	Ipeak (A)	Irms@60°C @10KHz (A)	ESR@100KHz ($\text{m}\Omega$)
		L	B	H	P	P1	d				
Un 1500VDC , Urms 570VAC , Us 2250V											
STC-1500-1.2-6G	1.2	57.5	30.0	45.0	52.5	10.2	1.2	500	600	27	4.5
STC-1500-1.5-2G	1.5	57.5	35.0	50.0	52.5		1.2	500	750	12	4.8
STC-1500-1.5-4G	1.5	57.5	35.0	50.0	52.5	20.3	1.2	500	750	22	4.1
STC-1500-1.5-6G	1.5	57.5	35.0	50.0	52.5	10.2	1.2	500	750	27	4.1
STC-1500-1.8-2G	1.8	57.5	35.0	50.0	52.5		1.2	500	900	12	4.5
STC-1500-1.8-4G	1.8	57.5	35.0	50.0	52.5	20.3	1.2	500	900	22	3.6
STC-1500-1.8-6G	1.8	57.5	35.0	50.0	52.5	10.2	1.2	500	900	30	3.6
Un 2000VDC , Urms 630VAC , Us 3000V											
STC-2000-0.015-2T	0.015	26.5	7.0	16.0	22.5		0.8	2150	32	2	56.2
STC-2000-0.022-2T	0.022	26.5	8.5	17.0	22.5		0.8	2150	47	2.5	40.5
STC-2000-0.033-2T	0.033	26.5	11.0	20.0	22.5		0.8	2150	71	3.5	31.5
STC-2000-0.033-2V	0.033	31.0	11.0	20.0	27.5		0.8	1750	58	4	35.5
STC-2000-0.047-2T	0.047	26.5	12.0	22.0	22.5		0.8	2150	101	4.5	22.5
STC-2000-0.047-2V	0.047	31.0	11.0	20.0	27.5		0.8	1750	82	4.5	25.2
STC-2000-0.068-2V	0.068	31.0	13.0	22.0	27.5		0.8	1750	119	5.5	18.2
STC-2000-0.10-2V	0.10	31.0	17.0	28.0	27.5		1.0	1750	175	8	15.7
STC-2000-0.15-2V	0.15	31.0	18.0	33.0	27.5		1.2	1750	263	11	12.5
STC-2000-0.15-4V	0.15	31.0	18.0	33.0	27.5	10.2	1.2	1750	263	12	10.5
STC-2000-0.15-2F	0.15	42.5	15.0	26.0	37.5		1.2	1000	150	9	15.8
STC-2000-0.22-2F	0.22	42.5	22.0	30.0	37.5		1.2	1000	220	12	7.8
STC-2000-0.33-2F	0.33	42.5	28.0	37.0	37.5		1.2	1000	330	12	7.2
STC-2000-0.33-4F	0.33	42.5	28.0	37.0	37.5	10.2	1.2	1000	330	18	4.6
STC-2000-0.39-2F	0.39	42.5	28.0	37.0	37.5		1.2	1000	390	12	7.1
STC-2000-0.39-4F	0.39	42.5	28.0	37.0	37.5	20.3	1.2	1000	390	19	4.5
STC-2000-0.47-2F	0.47	42.5	28.0	37.0	37.5		1.2	1000	470	12	6.2
STC-2000-0.47-4F	0.47	42.5	28.0	37.0	37.5	20.3	1.2	1000	470	22	5.1
STC-2000-0.56-2F	0.56	42.5	30.0	45.0	37.5		1.2	1000	560	12	5.6
STC-2000-0.56-4F	0.56	42.5	30.0	45.0	37.5	20.3	1.2	1000	560	22	4.6
STC-2000-0.56-6F	0.56	42.5	33.0	45.0	37.5	10.2	1.2	1000	560	27	4.6
STC-2000-0.68-2F	0.68	42.5	33.0	45.0	37.5		1.2	1000	680	12	5.6
STC-2000-0.68-4F	0.68	42.5	33.0	45.0	37.5	20.3	1.2	1000	680	22	4.6
STC-2000-0.68-6F	0.68	42.5	33.0	45.0	37.5	10.2	1.2	1000	680	28	4.5
STC-2000-0.68-2G	0.68	57.5	30.0	45.0	52.5		1.2	580	394	12	6.5
STC-2000-0.68-4G	0.68	57.5	30.0	45.0	52.5	20.3	1.2	580	394	22	5.4
STC-2000-0.68-6G	0.68	57.5	30.0	45.0	52.5	10.2	1.2	580	394	27	5.4
STC-2000-0.82-2G	0.82	57.5	30.0	45.0	52.5		1.2	580	476	12	5.9
STC-2000-0.82-4G	0.82	57.5	30.0	45.0	52.5	20.3	1.2	580	476	22	4.8
STC-2000-0.82-6G	0.82	57.5	30.0	45.0	52.5	10.2	1.2	580	476	24	4.6
STC-2000-1.0-2G	1.0	57.5	35.0	50.0	52.5		1.2	580	580	12	5.4
STC-2000-1.0-4G	1.0	57.5	35.0	50.0	52.5	20.3	1.2	580	580	22	4.5
STC-2000-1.0-6G	1.0	57.5	35.0	50.0	52.5	10.2	1.2	580	580	29	4.5
STC-2000-1.2-2G	1.2	57.5	35.0	50.0	52.5		1.2	580	696	12	4.8
STC-2000-1.2-4G	1.2	57.5	35.0	50.0	52.5	20.3	1.2	580	696	22	3.7
STC-2000-1.2-6G	1.2	57.5	35.0	50.0	52.5	10.2	1.2	580	696	29	3.7
Un 2500VDC , Urms 700VAC , Us 3750V											
STC-2500-0.0068-2T	0.0068	26.5	7.0	16.0	22.5		0.8	2650	18	1.5	102
STC-2500-0.010-2T	0.010	26.5	8.5	17.0	22.5		0.8	2650	27	2	76.5
STC-2500-0.015-2T	0.015	26.5	10.0	18.5	22.5		0.8	2650	40	2.5	54.0
STC-2500-0.022-2T	0.022	26.5	12.0	22.0	22.5		0.8	2650	58	3	39.8
STC-2500-0.022-2V	0.022	31.0	11.0	20.0	27.5		0.8	2150	47	3	45.7
STC-2500-0.033-2V	0.033	31.0	11.0	20.0	27.5		0.8	2150	71	4	33.8
STC-2500-0.047-2V	0.047	31.0	13.0	22.0	27.5		0.8	2150	101	5.5	25.0

特性参数

订货代码	容量 (μ F)	尺寸 (mm)						Du/dt (v/ μ s)	Ipeak (A)	Irms@60°C @10KHz (A)	ESR@100KHz (m Ω)
		L	B	H	P	P1	d				
Un 2500VDC , Urms 700VAC , Us 3750V											
STC-2500-0.068-2V	0.068	31.0	17.0	28.0	27.5		1.0	2150	146	8	17.3
STC-2500-0.10-2V	0.10	31.0	18.0	33.0	27.5		1.2	2150	215	10	11.5
STC-2500-0.10-4V	0.10	31.0	18.0	33.0	27.5	10.2	1.2	2150	215	11.5	11.5
STC-2500-0.10-2F	0.10	42.5	15.0	26.0	37.5		1.2	1350	135	8.5	17.5
STC-2500-0.15-2F	0.15	42.5	22.0	30.0	37.5		1.2	1350	203	11	11.5
STC-2500-0.15-4F	0.15	42.5	22.0	30.0	37.5	10.2	1.2	1350	203	15	9.8
STC-2500-0.22-2F	0.22	42.5	28.0	37.0	37.5		1.2	1350	297	12	8.7
STC-2500-0.22-4F	0.22	42.5	28.0	37.0	37.5	10.2	1.2	1350	297	22	7.8
STC-2500-0.33-2F	0.33	42.5	28.0	37.0	37.5		1.2	1350	446	12	6.5
STC-2500-0.33-4F	0.33	42.5	28.0	37.0	37.5	20.3	1.2	1350	446	20	5.9
STC-2500-0.39-2F	0.39	42.5	30.0	45.0	37.5		1.2	1350	527	12	5.8
STC-2500-0.39-4F	0.39	42.5	30.0	45.0	37.5	20.3	1.2	1350	527	20	5.6
STC-2500-0.39-6F	0.39	42.5	33.0	45.0	37.5	10.2	1.2	1350	527	25	5.6
STC-2500-0.47-6F	0.47	42.5	33.0	45.0	37.5	10.2	1.2	1350	635	25	5.3
STC-2500-0.47-2G	0.47	57.5	30.0	45.0	52.5		1.2	750	353	12	6.5
STC-2500-0.47-4G	0.47	57.5	30.0	45.0	52.5	20.3	1.2	750	353	22	5.8
STC-2500-0.56-2G	0.56	57.5	30.0	45.0	52.5		1.2	750	420	12	6.5
STC-2500-0.56-4G	0.56	57.5	30.0	45.0	52.5	20.3	1.2	750	420	22	5.4
STC-2500-0.56-6G	0.56	57.5	30.0	45.0	52.5	10.2	1.2	750	420	25	5.4
STC-2500-0.68-2G	0.68	57.5	35.0	50.0	52.5		1.2	750	510	12	6.2
STC-2500-0.68-4G	0.68	57.5	35.0	50.0	52.5	20.3	1.2	750	510	22	5.1
STC-2500-0.68-6G	0.68	57.5	35.0	50.0	52.5	10.2	1.2	750	510	25	5.1
STC-2500-0.82-2G	0.82	57.5	35.0	50.0	52.5		1.2	750	615	12	5.6
STC-2500-0.82-4G	0.82	57.5	35.0	50.0	52.5	20.3	1.2	750	615	22	4.5
STC-2500-0.82-6G	0.82	57.5	35.0	50.0	52.5	10.2	1.2	750	615	26	4.2
Un 3000VDC , Urms 750VAC , Us 4500V											
STC-3000-0.0047-2T	0.0047	26.5	7.0	16.0	22.5		0.8	3400	16	1.5	130.5
STC-3000-0.010-2T	0.010	26.5	11.0	20.0	22.5		0.8	3400	34	2.5	68.5
STC-3000-0.010-2V	0.010	31.0	9.0	18.0	27.5		0.8	2750	28	2.5	81.5
STC-3000-0.022-2T	0.022	26.5	12.0	22.0	22.5		0.8	3400	51	3	49.5
STC-3000-0.022-2V	0.022	31.0	11.0	20.0	27.5		0.8	2750	61	3	57.5
STC-3000-0.022-2VS	0.022	31.0	13.0	22.0	27.5		0.8	2750	61	4	39.7
STC-3000-0.033-2V	0.033	31.0	15.0	24.5	27.5		0.8	2750	91	5	28.5
STC-3000-0.047-2V	0.047	31.0	18.0	33.0	27.5		1.0	2750	129	7.5	20.7
STC-3000-0.10-2F	0.10	42.5	22.0	30.0	37.5		1.2	1600	160	10	14.5
STC-3000-0.10-4F	0.10	42.5	22.0	30.0	37.5	10.2	1.2	1600	160	12.5	13.5
STC-3000-0.15-2F	0.15	42.5	28.0	37.0	37.5		1.2	1600	240	12	10.2
STC-3000-0.15-4F	0.15	42.5	28.0	37.0	37.5	10.2	1.2	1600	240	14.5	9.5
STC-3000-0.18-4F	0.18	42.5	28.0	37.0	37.5	10.2	1.2	1600	288	16	8.7
STC-3000-0.22-2F	0.22	42.5	30.0	45.0	37.5		1.2	1600	352	12	8.7
STC-3000-0.22-4F	0.22	42.5	30.0	45.0	37.5	20.3	1.2	1600	352	18	7.1
STC-3000-0.22-6F	0.22	42.5	33.0	45.0	37.5	10.2	1.2	1600	352	25	9.2
STC-3000-0.24-6F	0.24	42.5	33.0	45.0	37.5	10.2	1.2	1600	384	24	8.7
STC-3000-0.27-6F	0.27	42.5	33.0	45.0	37.5	10.2	1.2	1600	432	26	8.6
STC-3000-0.33-6F	0.33	42.5	33.0	45.0	37.5	10.2	1.2	1600	528	24	8.0
STC-3000-0.33-2G	0.33	57.5	30.0	45.0	52.5		1.2	875	289	12	8.6
STC-3000-0.33-4G	0.33	57.5	30.0	45.0	52.5	20.3	1.2	875	289	20	9.0
STC-3000-0.35-6F	0.35	42.5	33.0	45.0	37.5	10.2	1.2	1600	560	28	5.2
STC-3000-0.47-2G	0.47	57.5	35.0	50.0	52.5		1.2	875	411	12	7.3
STC-3000-0.47-4G	0.47	57.5	35.0	50.0	52.5	20.3	1.2	875	411	22	5.7