

产品特点

介质：金属化聚丙烯薄膜
 外壳：塑料外壳封装
 内部灌封：树脂填充 (UL94 V-0)

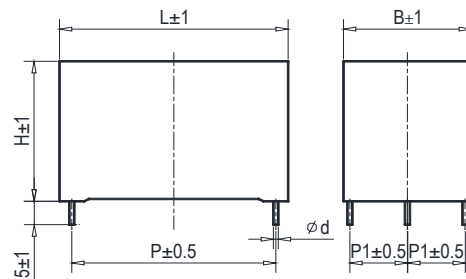
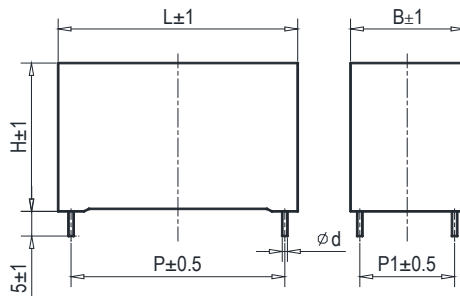
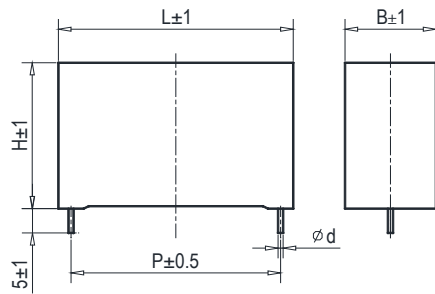
电气特性

工作温度：- 40 至 + 105 °C (Ths≤105°C)
 容量范围：1.0 至 145μF
 额定电压：700 至 1200 VDC
 容量偏差：± 5% , ± 10%
 损耗因素：≤1.0×10⁻³ @ 100 Hz, 20±5°C
 预期寿命：100,000 小时 @ Un, 70 °C(热点温度)
 极间耐压：1.5Un (DC) @ 10s, 20±5°C
 极壳耐压：(1.5Un+2000)VAC, 最小 3000VAC (10s,50Hz)
 (IR×Cn) 30000s (不超过 30GΩ),
 绝缘电阻：100VDC (20±5°C), 1 分钟



应用

DC 滤波 HEV、EV (OBC) 马达驱动



电压等级

Un at 85°C	500V	600V	700V	800V	900V	1000V	1100V	1200V
Un at 105°C	365V	435V	510V	580V	655V	730V	800V	875V

特性参数

订货代码	容量 (μF)	尺寸 (mm)						Du/dt ($\text{V}/\mu\text{s}$)	$I_{\text{Max}}@60^\circ\text{C}$ @10KHz (A)	ESR@10KHz ($\text{m}\Omega$)
		L	B	H	P	P1	d			
Un 700VDC , Us 1050V , Ur 150V										
SHB-700-3.0-2VB1	3.0	31	9	18	27.5		0.8	30	3.6	25.8
SHB-700-4.0-2VB1	4.0	31	11	20	27.5		0.8	30	4.4	19.9
SHB-700-6.0-2VB1	6.0	31	13	22	27.5		0.8	30	5.0	13.8
SHB-700-8.0-2VB0	8.0	31	15	24.5	27.5		0.8	30	5.0	10.7
SHB-700-10-2VB1	10	31	17	28	27.5		0.8	30	5.0	8.8
SHB-700-15-2VB1	15	31	18	33	27.5		0.8	30	5.0	6.4
SHB-700-17-4VB1	17	31	22	31	27.5	10.2	0.8	30	10.1	5.6
SHB-700-22-4FB1	22	42.5	22	30	37.5	10.2	1.2	21	11.3	6.7
SHB-700-40-4FB1	40	42.5	28	37	37.5	10.2	1.2	21	15.9	4.2
SHB-700-50-4FB1	50	42.5	30	45	37.5	20.3	1.2	21	18.4	3.6
SHB-700-60-4FB0	60	42.5	33	45	37.5	20.3	1.2	21	20.1	3.2
SHB-700-80-4GB1	80	57.5	30	45	52.5	20.3	1.2	14	19.6	3.9
SHB-700-100-4GB1	100	57.5	35	50	52.5	20.3	1.2	14	22.6	3.4
SHB-700-145-4GB1	145	57.5	42.5	56	52.5	20.3	1.2	14	22.6	2.7
SHB-700-145-6GB1	145	57.5	42.5	56	52.5	10.2	1.2	14	26.6	2.9
Un 800VDC , Us 1200V , Ur 175V										
SHB-800-2.0-2VB1	2.0	31	9	18	27.5		0.8	36	3.1	34.9
SHB-800-3.0-2VB1	3.0	31	11	20	27.5		0.8	36	4.0	24.0
SHB-800-4.0-2VB1	4.0	31	13	22	27.5		0.8	36	4.9	18.4
SHB-800-6.0-2VB1	6.0	31	15	24.5	27.5		0.8	36	5.0	12.8
SHB-800-8.0-2VB1	8.0	31	17	28	27.5		0.8	36	5.0	10.0
SHB-800-10-2VB1	10	31	18	33	27.5		0.8	36	5.0	8.2
SHB-800-12-4VB1	12	31	22	31	27.5	10.2	0.8	36	10.0	6.9
SHB-800-16-4FB1	16	42.5	22	30	37.5	10.2	1.2	28	10.3	8.0
SHB-800-25-4FB1	25	42.5	28	37	37.5	10.2	1.2	28	13.9	5.5
SHB-800-35-4FB1	35	42.5	30	45	37.5	20.3	1.2	28	16.9	4.3
SHB-800-42-4FB1	42	42.5	33	45	37.5	20.3	1.2	28	18.5	3.7
SHB-800-55-4GB1	55	57.5	30	45	52.5	20.3	1.2	16	17.9	4.7
SHB-800-75-4GB0	75	57.5	35	50	52.5	20.3	1.2	16	21.4	3.8
SHB-800-110-4GB0	110	57.5	42.5	56	52.5	20.3	1.2	16	22.6	2.9
SHB-800-110-6GB1	110	57.5	42.5	56	52.5	10.2	1.2	16	25.5	3.1
Un 900VDC , Us 1350V , Ur 200V										
SHB-900-1.5-2VB1	1.5	31	9	18	27.5		0.8	45	2.8	44.0
SHB-900-2.5-2VB1	2.5	31	11	20	27.5		0.8	45	3.8	27.3
SHB-900-3.3-2VB1	3.3	31	13	22	27.5		0.8	45	4.6	21.1
SHB-900-4.5-2VB1	4.5	31	15	24.5	27.5		0.8	45	5.0	15.9
SHB-900-6.0-2VB1	6.0	31	17	28	27.5		0.8	45	5.0	12.3
SHB-900-8.5-2VB1	8.5	31	18	33	27.5		0.8	45	5.0	9.1
SHB-900-10-4VB1	10	31	22	31	27.5	10.2	0.8	45	9.4	7.7
SHB-900-14-4FB1	14	42.5	22	30	37.5	10.2	1.2	32	10.0	8.5
SHB-900-25-4FB1	25	42.5	28	37	37.5	10.2	1.2	32	14.2	5.3
SHB-900-33-4FB1	33	42.5	30	45	37.5	20.3	1.2	32	16.9	4.3
SHB-900-35-4FB1	35	42.5	33	45	37.5	20.3	1.2	32	17.7	4.1
SHB-900-50-4GB1	50	57.5	30	45	52.5	20.3	1.2	20	17.7	4.8
SHB-900-65-4GB1	65	57.5	35	50	52.5	20.3	1.2	20	20.9	4.0
SHB-900-90-4GB1	90	57.5	42.5	56	52.5	20.3	1.2	20	22.6	3.2
SHB-900-90-6GB1	90	57.5	42.5	56	52.5	10.2	1.2	20	24.6	3.4

特性参数

订货代码	容量 (μF)	尺寸 (mm)						Du/dt (v/ μs)	$I_{\text{Max}}@60^\circ\text{C}$ @10KHz (A)	ESR@10KHz (m Ω)
		L	B	H	P	P1	d			
Un 1100VDC , Us 1650V , Ur 225V										
SHB-1100-1.2-2VB1	1.2	31	9	18	27.5		0.8	45	2.6	51.5
SHB-1100-2.0-2VB1	2.0	31	11	20	27.5		0.8	45	3.5	31.9
SHB-1100-2.5-2VB1	2.5	31	13	22	27.5		0.8	45	4.1	25.9
SHB-1100-3.5-2VB1	3.5	31	15	24.5	27.5		0.8	45	5.0	19.0
SHB-1100-5.0-2VB1	5.0	31	17	28	27.5		0.8	45	5.0	13.7
SHB-1100-6.0-2VB1	6.0	31	18	33	27.5		0.8	45	5.0	11.7
SHB-1100-6.0-4VB0	6.0	31	18	33	27.5	10.2	0.8	45	7.4	11.5
SHB-1100-7.5-4VB1	7.5	31	22	31	27.5	10.2	0.8	45	8.5	9.4
SHB-1100-10-4FB1	10	42.5	22	30	37.5	10.2	1.2	32	9.0	10.5
SHB-1100-18-4FB1	18	42.5	28	37	37.5	10.2	1.2	32	12.9	6.4
SHB-1100-22-4FB0	22	42.5	30	45	37.5	20.3	1.2	32	14.9	5.5
SHB-1100-25-4FB0	25	42.5	33	45	37.5	20.3	1.2	32	16.1	4.9
SHB-1100-35-4GB1	35	57.5	30	45	52.5	20.3	1.2	20	16.0	5.9
SHB-1100-50-4GB1	50	57.5	35	50	52.5	20.3	1.2	20	19.7	4.5
SHB-1100-65-4GB1	65	57.5	42.5	56	52.5	20.3	1.2	20	22.6	3.7
Un 1200VDC , Us 1800V , Ur 250V										
SHB-1200-1.0-2VB1	1.0	31	9	18	27.5		0.8	50	2.4	58.5
SHB-1200-1.5-2VB1	1.5	31	11	20	27.5		0.8	50	3.1	39.9
SHB-1200-2.0-2VB1	2.0	31	13	22	27.5		0.8	50	3.8	30.4
SHB-1200-3.0-2VB1	3.0	31	15	24.5	27.5		0.8	50	4.9	20.9
SHB-1200-4.0-2VB1	4.0	31	17	28	27.5		0.8	50	5.0	16.0
SHB-1200-5.0-2VB1	5.0	31	18	33	27.5		0.8	50	5.0	13.1
SHB-1200-6.0-4VB1	6.0	31	22	31	27.5	10.2	0.8	50	7.9	11.0
SHB-1200-8.0-4FB1	8.0	42.5	22	30	37.5	10.2	1.2	38	8.4	12.2
SHB-1200-14-4FB1	14	42.5	28	37	37.5	10.2	1.2	38	12.0	7.5
SHB-1200-18-4FB1	18	42.5	30	45	37.5	20.3	1.2	38	14.2	6.1
SHB-1200-20-4FB1	20	42.5	33	45	37.5	20.3	1.2	38	15.2	5.6
SHB-1200-30-4GB1	30	57.5	30	45	52.5	20.3	1.2	30	15.6	6.2
SHB-1200-40-4GB1	40	57.5	35	50	52.5	20.3	1.2	30	18.7	5.0
SHB-1200-55-4GB1	55	57.5	42.5	56	52.5	20.3	1.2	30	22.6	3.9